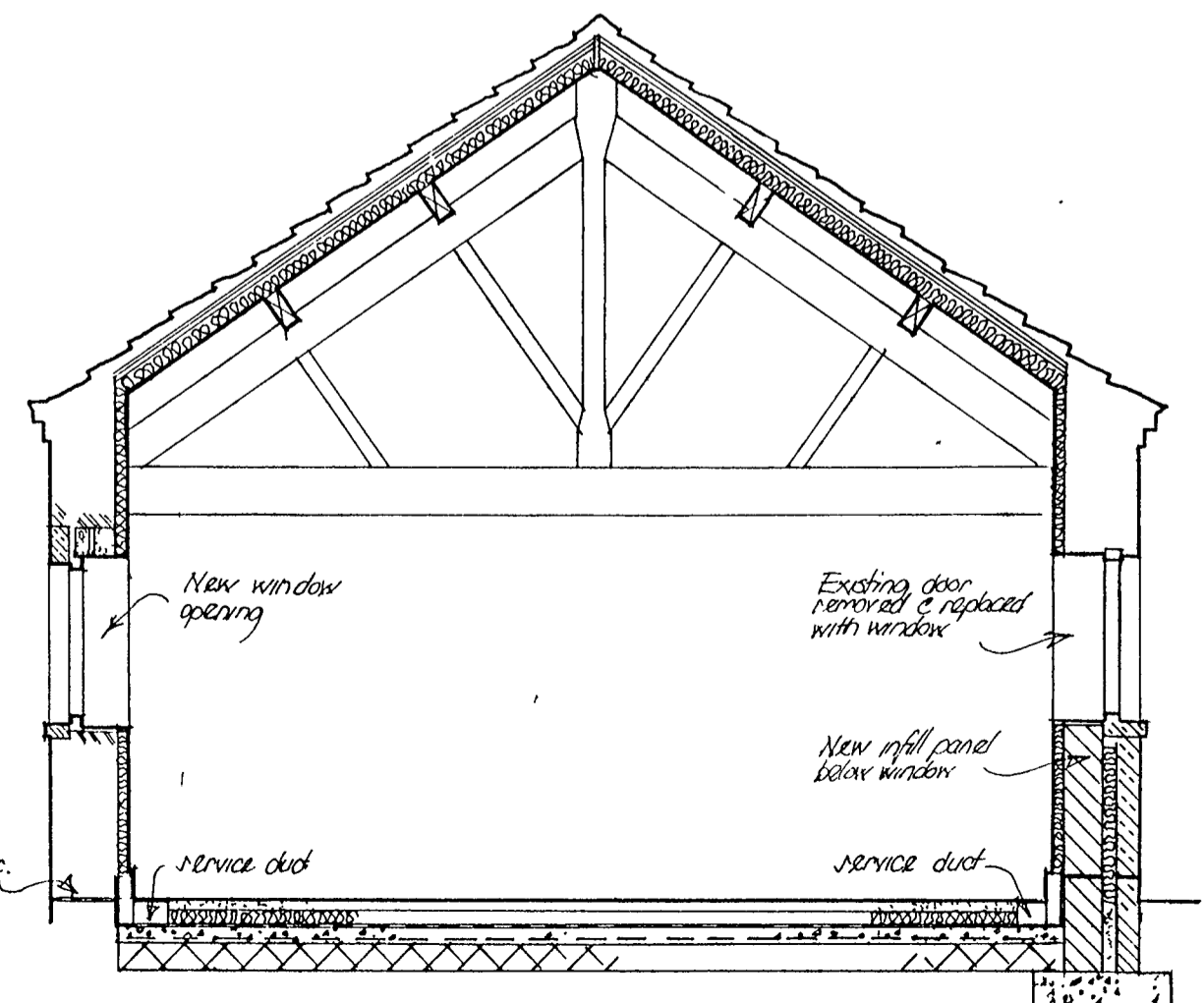


PLAN
1:50

- A 15th July 03
Various notes to plan added
Sections B-B & C-C drawn
Opening detail drawn
- B 17th July 03
High level window retained
and fixed doors blocked up
to inside of back wall
Section A-A altered
- C 22nd July 03
Floor insulation thickness
increased to 90mm
Door & window ref now added



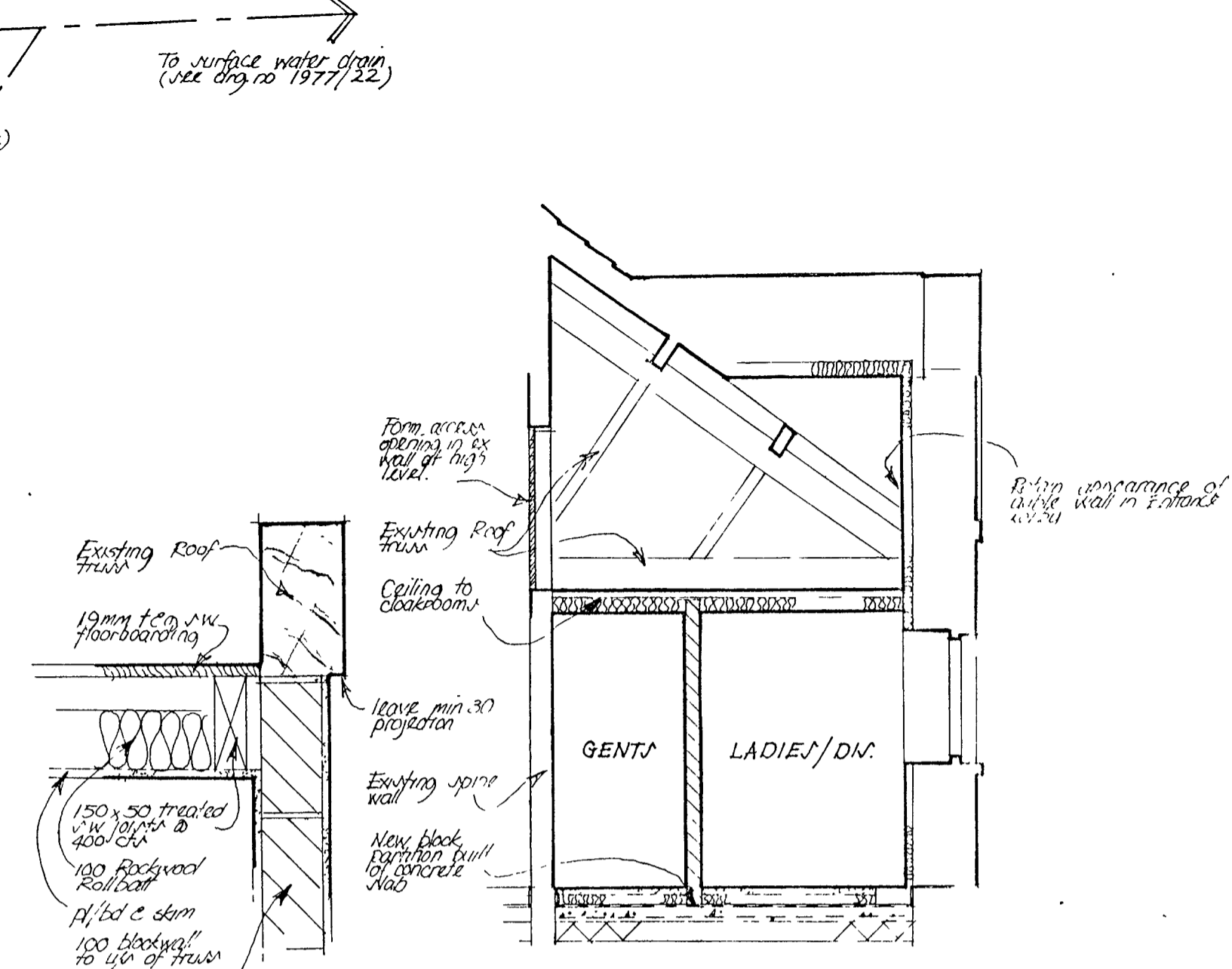
SECTION A-A 1:50

ROOF
Layer of 'Watts Tri-Lap Super 9' insulation
fixed over rafters with counter battens.
None along finish fixed to rafter battens
over breathe membrane.

50mm thick Kingspan Thermaflatch TPI0
jacking insulation fixed between rafters
with 12.5mm thick duplex plasterboard & skim.

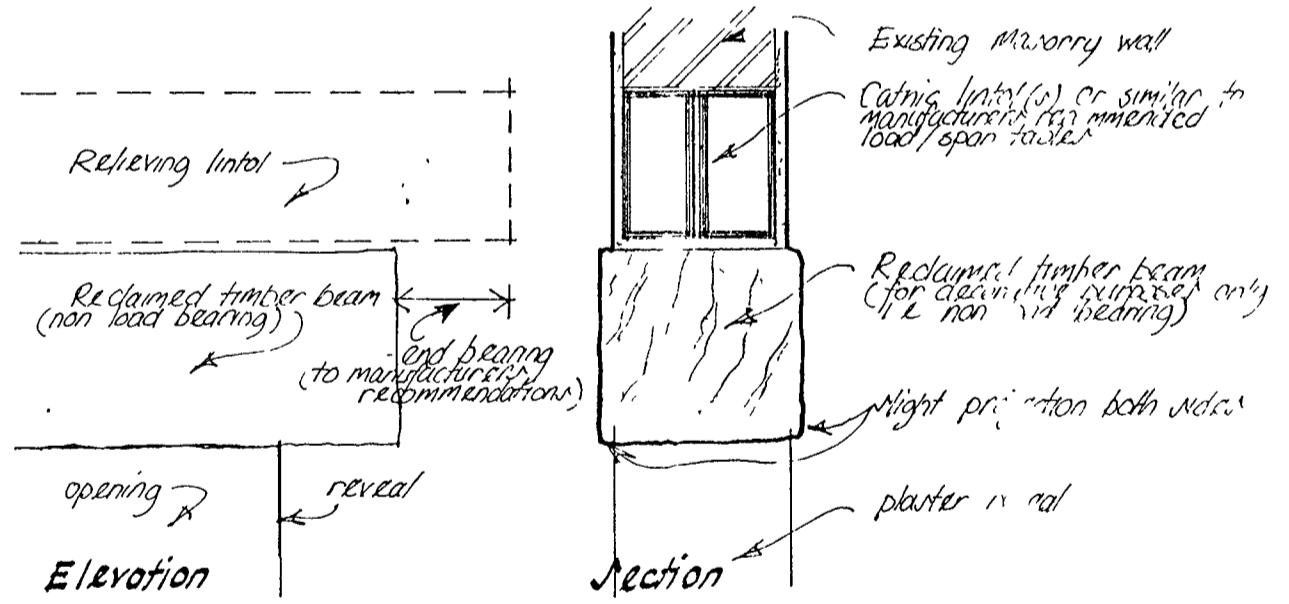
WALLS (external)
40mm thick Suproc rowool insulation
fixed between 'Quiplex' metal frame-work
with 12.5mm thick duplex plasterboard & skim.

FLOOR
70mm screed on 90mm thick Rockwool
'Rockfloor' insulation on 1200g visqueen
0.1m on 125mm thick reinforced concrete
slab on min 150mm thick well compacted
hardcore.



SECTION C-C
1:10

SECTION B-B
1:50



TYPICAL DETAIL OF OPENINGS 1:10

PROPOSED OFFICE - PHASE 1 (Unit 3)
LAYOUT PLAN & CROSS SECTION
HOME FARM, NOSTELL
FOR THE NOSTELL ESTATE

Francis Johnson & Piers, Chartered Architects
'Craven House', 16 High Street, Bridlington, East Yorkshire
Scale 1:50 Drawn
Dwg No 1977/36 C